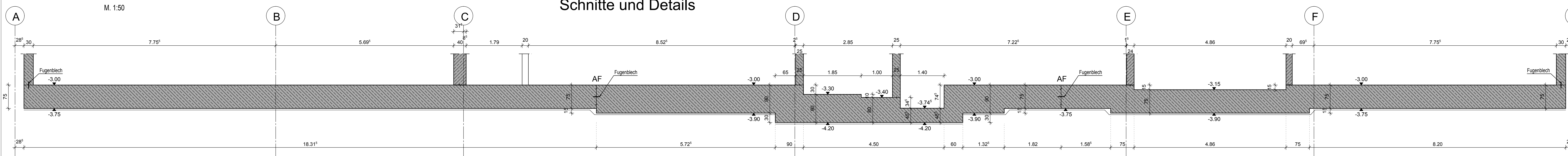


Schalplan Gründung Schnitte und Details

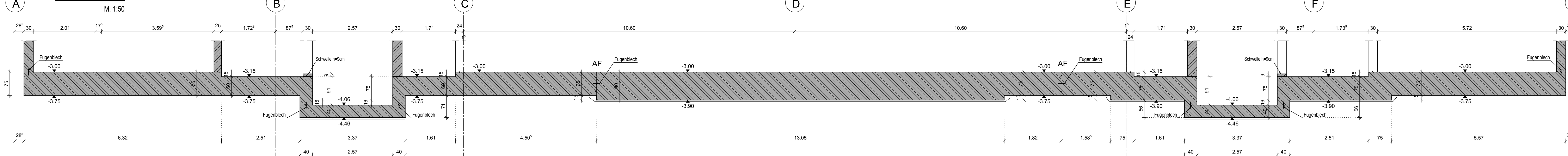
Schnitt 1 - 1

M. 1:50



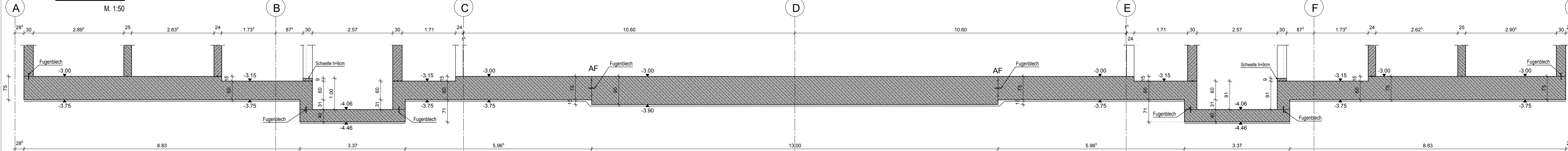
Schnitt 2 - 2

M. 1:50



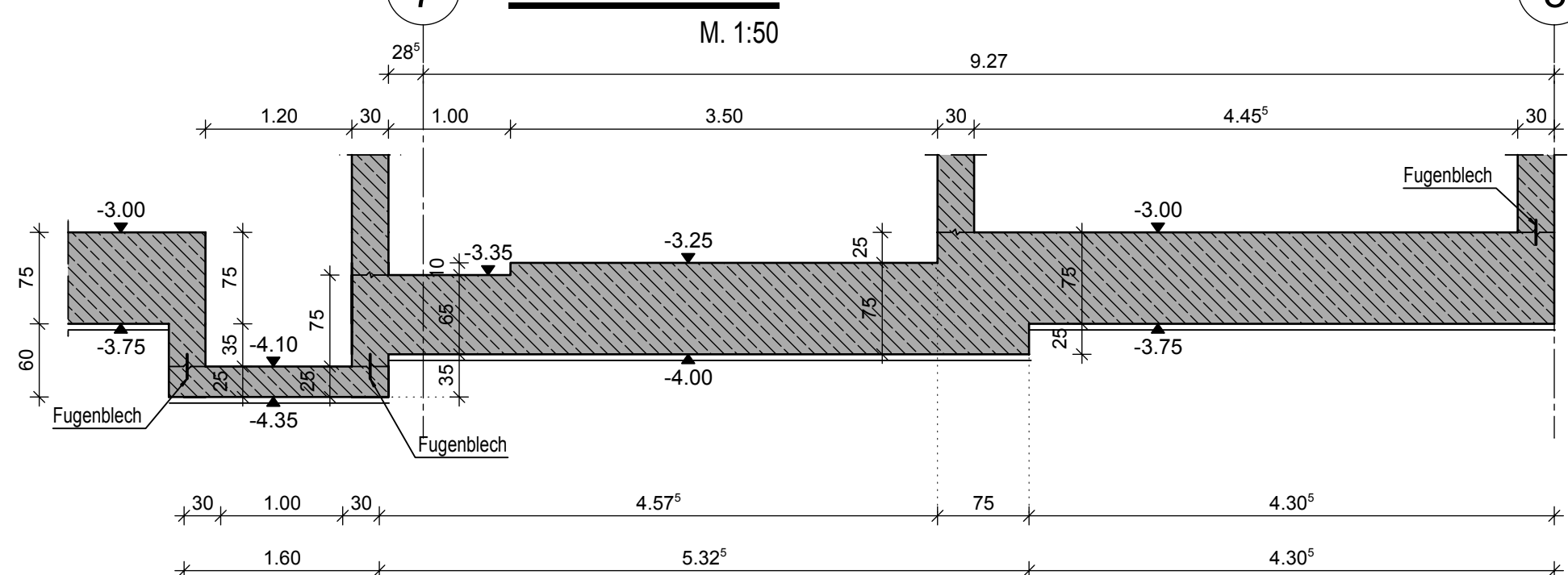
Schnitt 3 - 3

M. 1:50



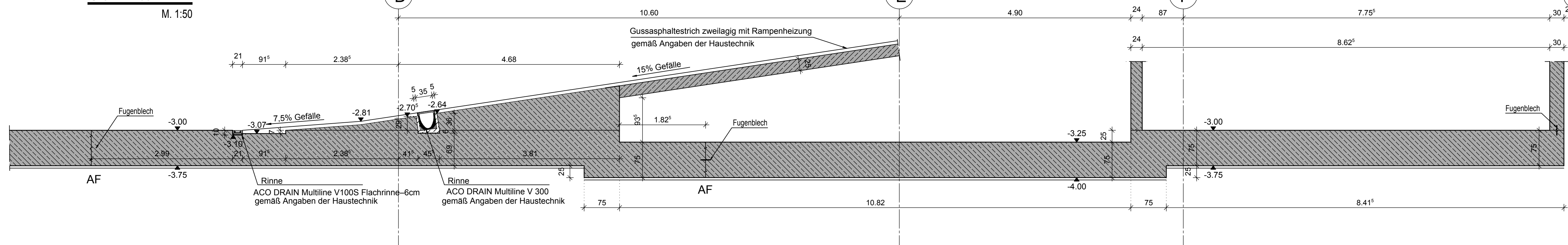
Schnitt 9 - 9

M. 1:50



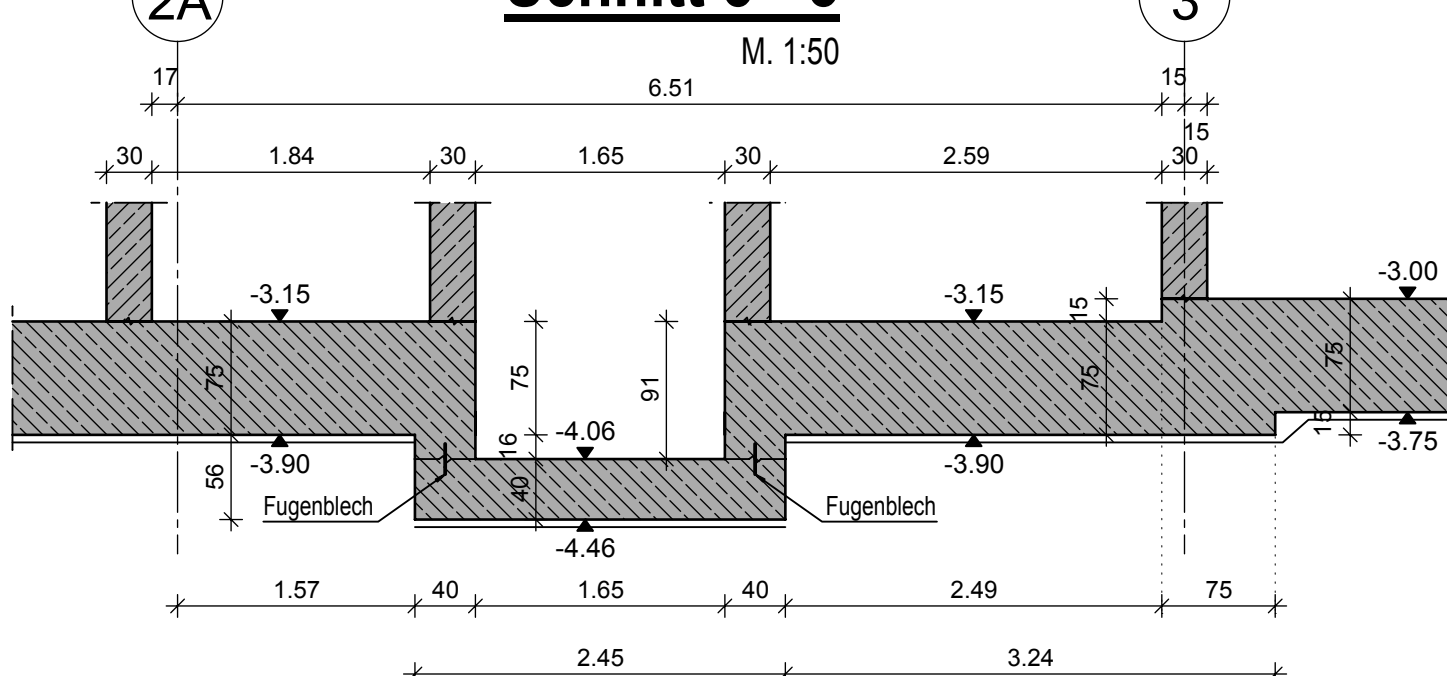
Schnitt 4 - 4

M. 1:50



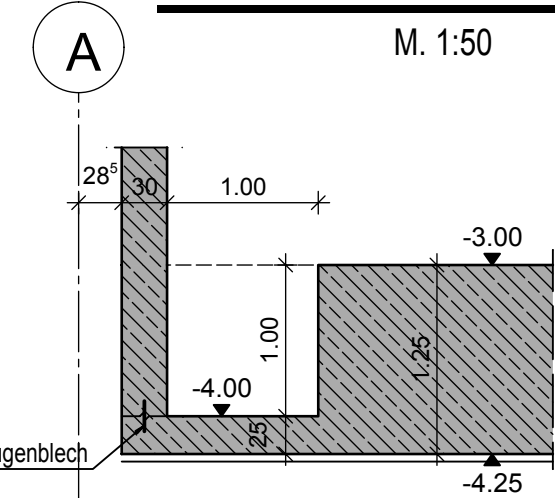
Schnitt 5 - 5

M. 1:50



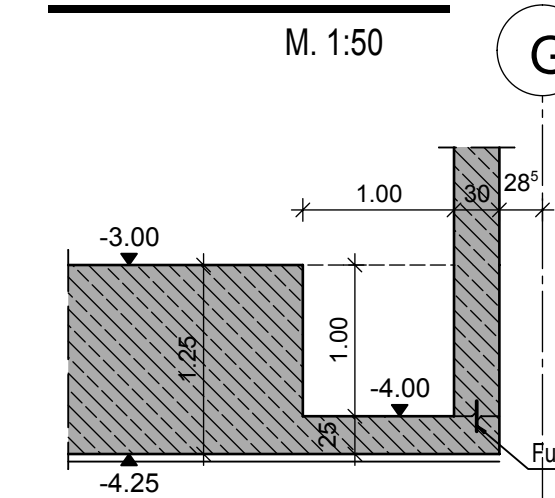
Schnitt 10 - 10

M. 1:50



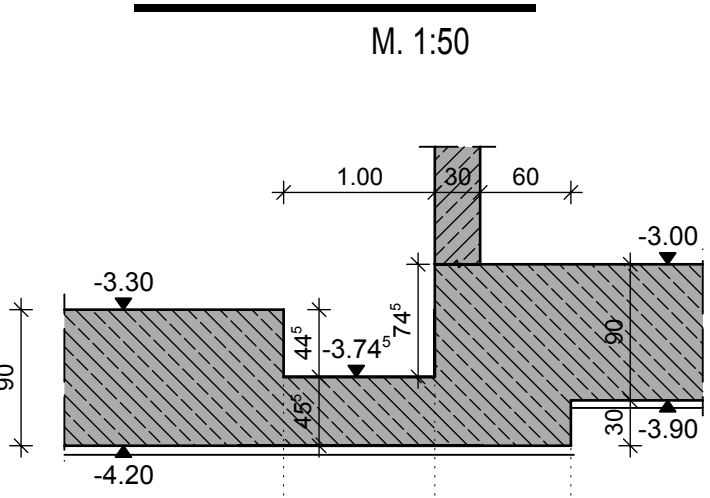
Schnitt 11 - 11

M. 1:50



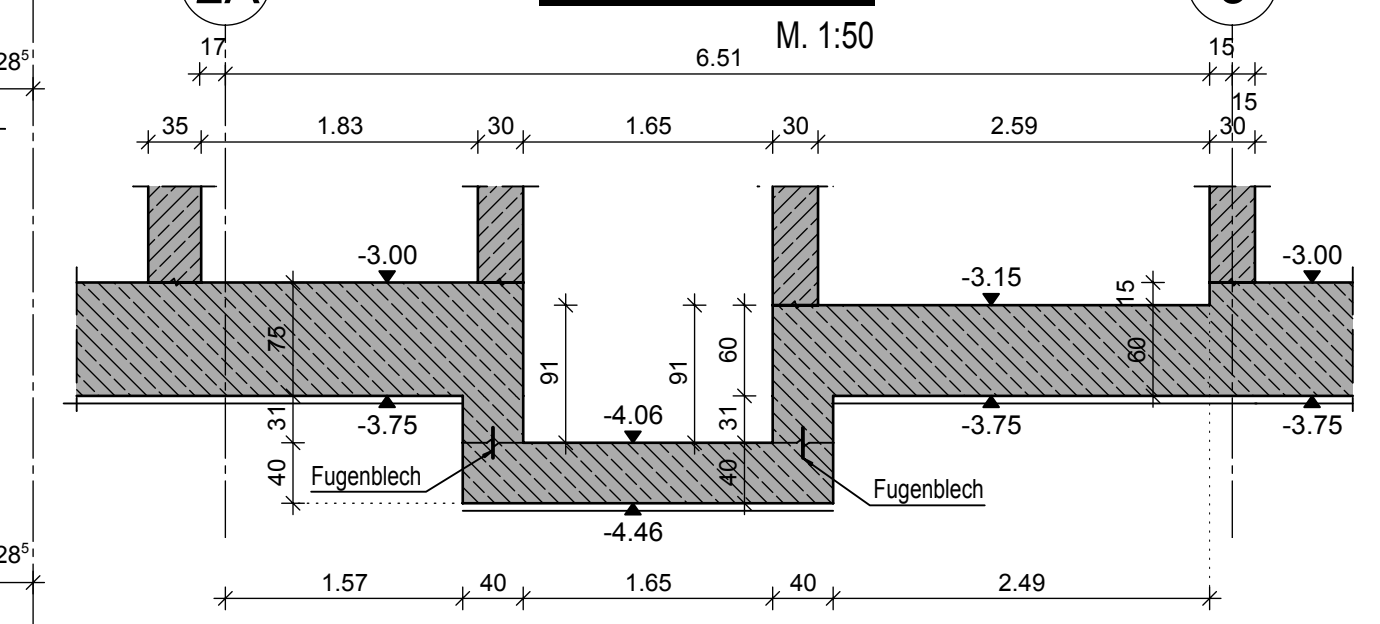
Schnitt 12 - 12

M. 1:50



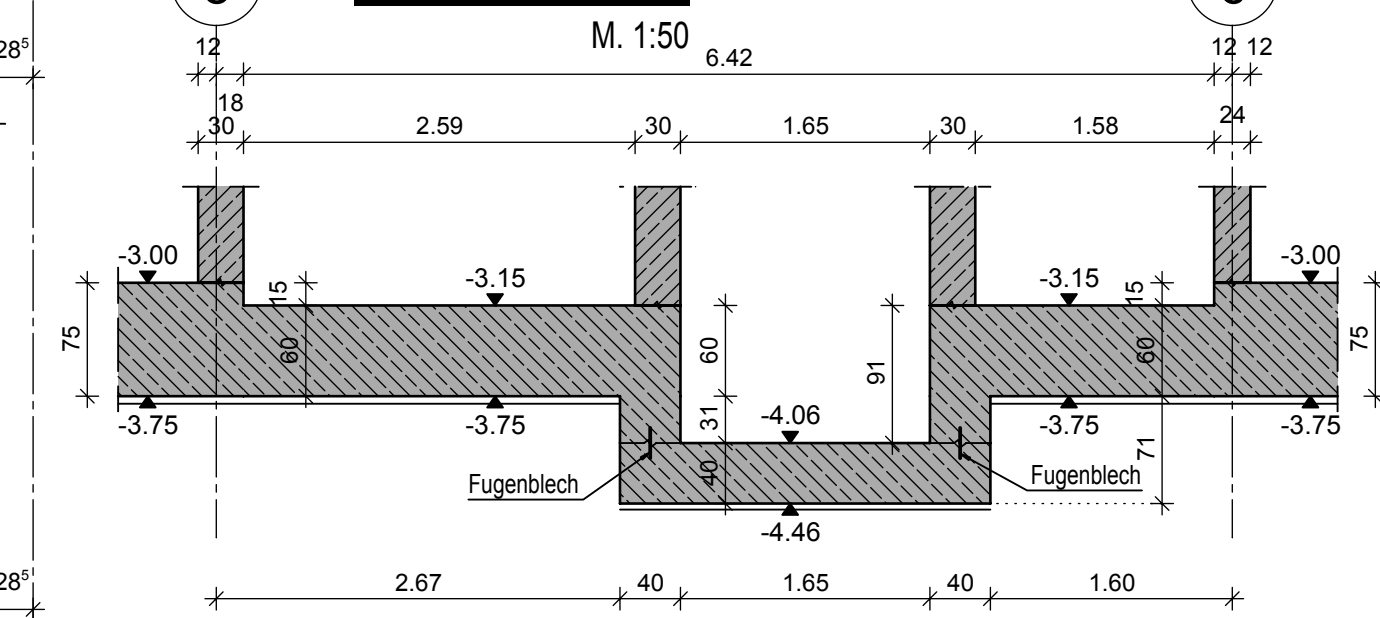
Schnitt 6 - 6

M. 1:50



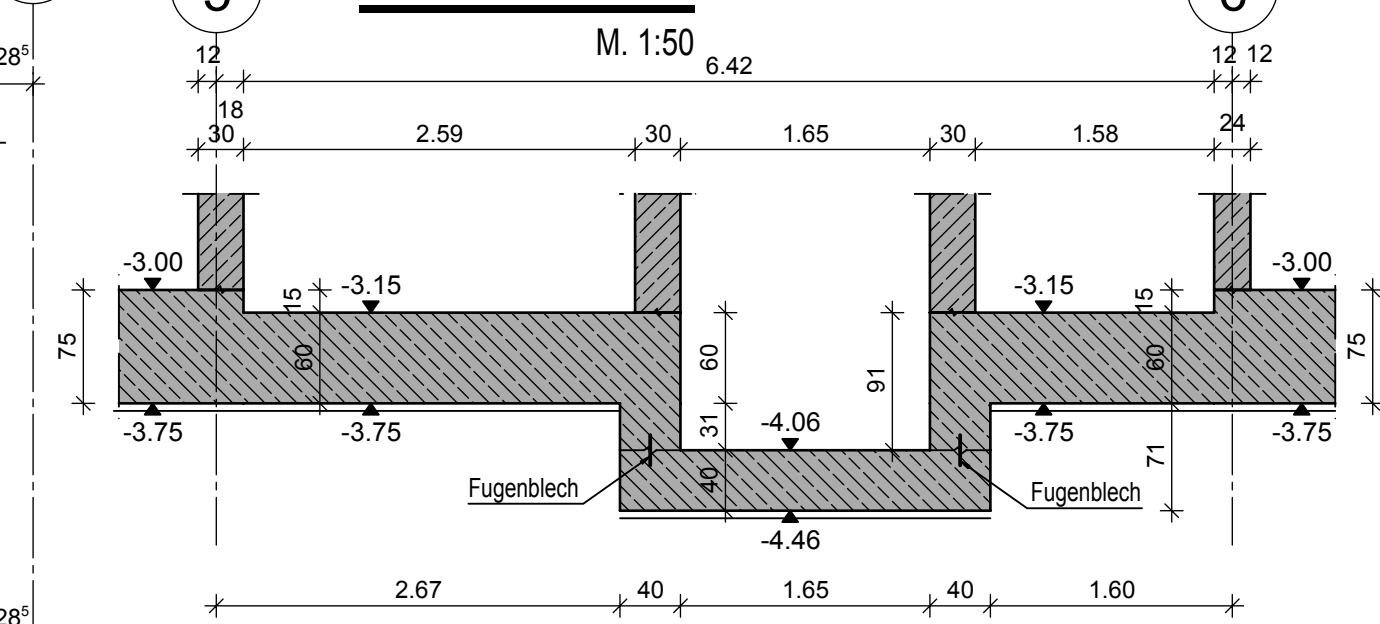
Schnitt 7 - 7

M. 1:50



Schnitt 8 - 8

M. 1:50

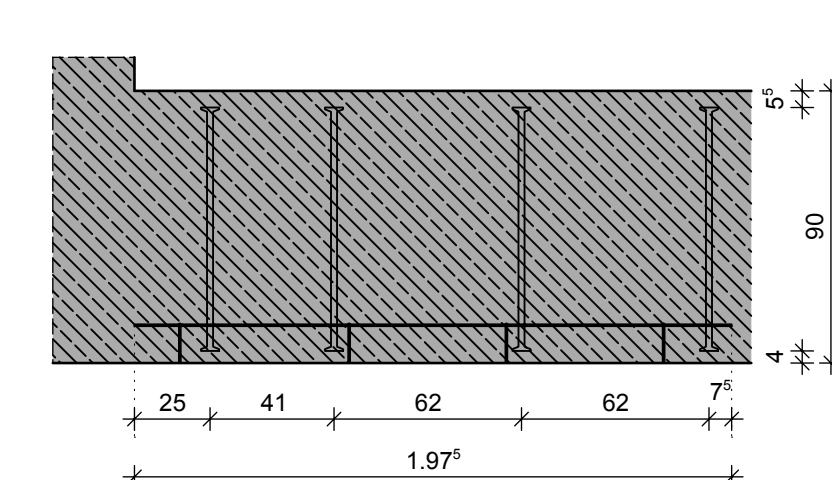


Einbau- und Zubehörteilliste

Pos.	Menge	Einheit	Bezeichnung	Werkstoff
(A)	48	Stück	Schöck BOLE 25/810-4/B1975-CV40 (250410/620/75)	It. Werk
(B)	34	Stück	Schöck BOLE 25/810-3/B1355-CV40 (250410/620/75)	It. Werk
(C)	140	Stück	Schöck BOLE 25/660-4/B1635-CV40 (200340/510/510/75)	It. Werk
(D)	20	Stück	Schöck BOLE 25/810-3/B1355-CV40 (250410/620/75)	It. Werk
(E)	42	Stück	Schöck BOLE 25/1160-3/B1875-CV40 (350580/870/75)	It. Werk

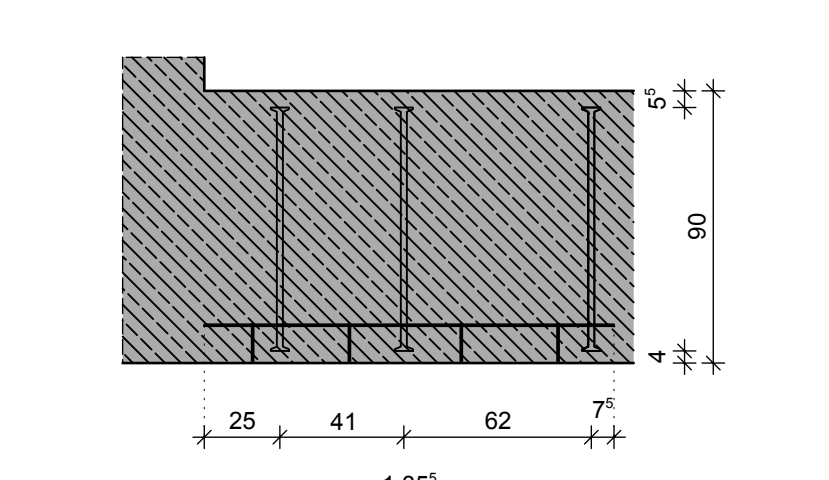
DS-F03 2 x herstellen

24x (A) Schöck BOLE 25/810-4/B1975-CV40 (250410/620/75)



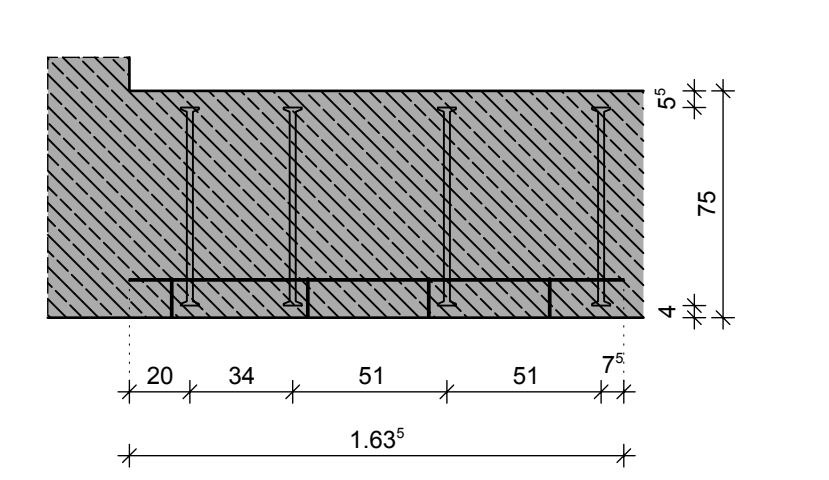
DS-F04a 2 x herstellen

17x (B) Schöck BOLE 25/810-3/B1355-CV40 (250410/620/75)



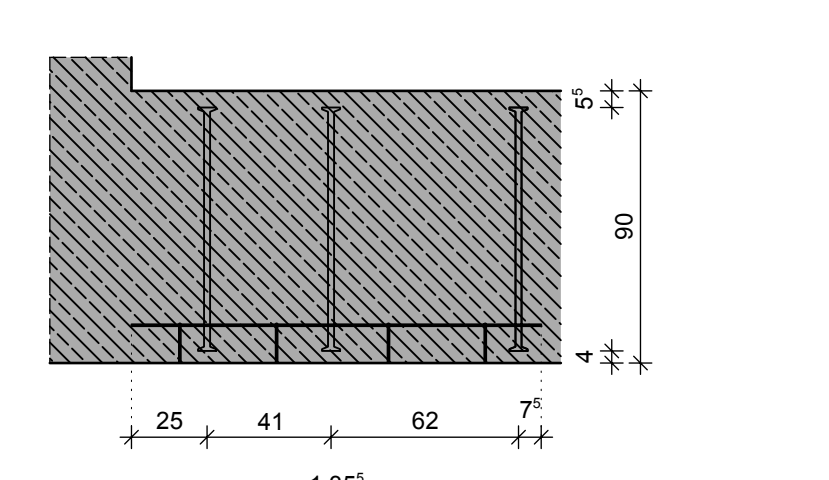
DS-F05 6 x herstellen

16x (C) Schöck BOLE 25/660-4/B1635-CV40 (200340/510/510/75)



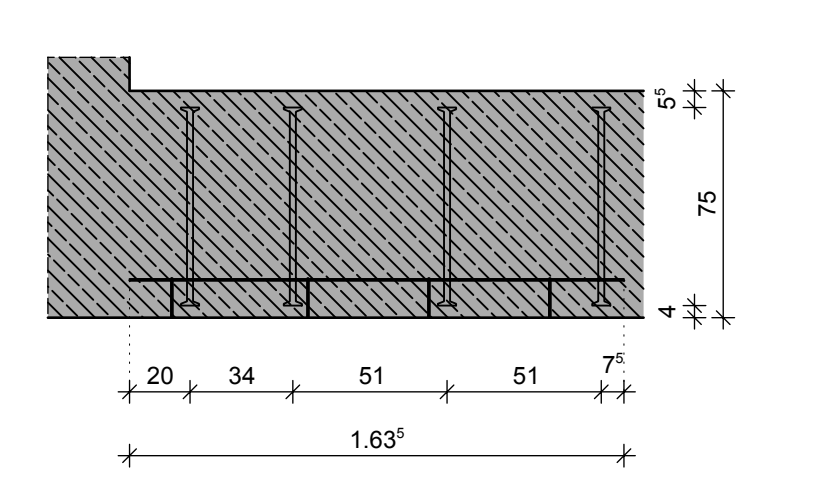
DS-F09 1 x herstellen

20x (D) Schöck BOLE 25/810-3/B1355-CV40 (250410/620/75)



DS-F10 4 x herstellen

11x (C) Schöck BOLE 25/660-4/B1635-CV40 (200340/510/510/75)



DS-F13 2 x herstellen

21x (E) Schöck BOLE 25/1160-3/B1875-CV40 (350580/870/75)

